

# University Transfer

## University Transfer Degrees

The university transfer program at ECC is a great place to start a four-year degree. It provides foundation courses equivalent to the first two years of a bachelor's degree and leads to transfer with junior standing to the college or university of choice.

The following college majors are offered at most Illinois state universities. Foundation courses required for them are available at ECC. Students with specific majors in mind will find it helpful to visit the college Web site for educational plans, outlining specific general education courses most appropriate for their transfer major, [elgin.edu/academics](http://elgin.edu/academics). Click on university transfer.

Accounting  
Art and graphic design  
Architecture  
Behavioral sciences  
Biology  
Business  
Chemistry  
Communications and languages  
Computer sciences  
Education  
Engineering and technology  
English  
Family and consumer sciences  
Health professions  
Hospitality and leisure  
Journalism  
Literature  
Mathematics  
Music  
Philosophy and humanities  
Physical education and recreation  
Psychology  
Physics  
Public service professions  
Sciences  
Sociology  
Theatre  
... and many more!

Preparation for post-graduate professions  
Higher education  
Law  
Medicine  
Veterinary medicine

## Transfer Degrees

The following five associate degrees are available in the ECC university transfer program. They are detailed in this section of the catalog.

Associate in arts  
Associate in science  
Associate in engineering science  
Associate in fine arts  
Associate in liberal studies

## Transfer Process

For a successful transfer to another school, ECC recommends the following guidelines. For more information, call the ECC Counseling and Transfer Center at 847-214-7390 or visit their Web page, [elgin.edu/counseling](http://elgin.edu/counseling).

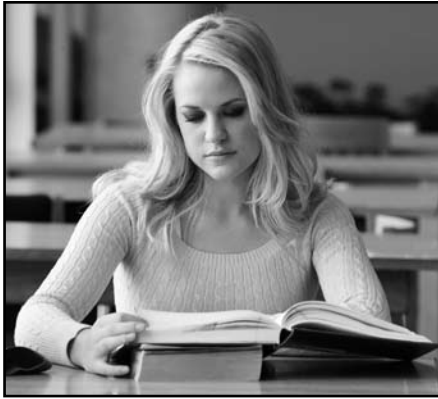
- Visit the Counseling Center where professional counselors can assist you in making life choices. Classes such as "Exploring Careers and College Majors" allow you to investigate career choice, college major and choosing a transfer college or university.
- Visit the Transfer Center for personalized assistance in selecting and corresponding with various departments at the school of your choice.
- Attend college night where over 120 college representatives visit ECC's campus.
- Obtain and study catalogs and the Web site of the four-year colleges or universities you are considering. Become familiar with their entrance, graduation and major requirements.
- Decide on your transfer school.
- Create a transfer educational plan with an ECC counselor using the catalog as a guide.
- Follow your educational plan. Consult your counselor when changes occur.
- At the beginning of your last semester at ECC, apply for graduation. You need to apply for your degree even if you do not plan to participate in the graduation ceremony. See pg. 175
- Accept final responsibility for your successful transfer to another institution.

## Transfer Guarantee

It is the policy of the District 509 Board of Trustees that students completing a transfer associate degree from ECC be guaranteed the acceptance of credits earned at ECC by the transfer institution, backed by an offer of a refund of tuition for any courses not accepted, subject to the conditions outlined below.

- A. The application for a refund must be submitted within one calendar year of completion or graduation with a transfer degree from ECC.
- B. The course must have been completed with a grade of C or better.
- C. The refund would be based upon the tuition paid at the time the course was completed.
- D. The student has met with an authorized counselor from ECC, declared a major and a transfer college or university prior to taking any courses in the guarantee, and taking only those courses approved in writing by the ECC counselor.
- E. The student transfers to the college or university declared within two years of initial enrollment at ECC.
- F. The student requests an evaluation by the transfer institution of the ECC courses completed immediately upon transfer.
- G. The student cooperates with ECC personnel in resolving any transfer difficulties by notifying the college and submitting any necessary consents or releases for student records or correspondence.
- H. The student submits within 60 days of being notified by the transfer institution that a course has been refused for credit and makes a claim for the refund. The claim must state the reasons for the refusal offered by the institution, the name, position, address and telephone number of the person notifying the student of the refusal and copies of any correspondence or documentation provided by the transfer institution. The college will first attempt to resolve the issue with the transfer institution. If favorable resolution is not achieved within 120 days, the reimbursement will be authorized.

The sole recourse available to participants enrolled in this guarantee program shall be limited to the tuition reimbursement of the class at the time of enrollment, with no recourse for damages, court costs or any associated costs of any kind or right to appeal beyond those specified by ECC.



## Illinois Articulation Initiative (IAI)

This statewide agreement, in which ECC participates, allows easy transfer of completed general education core curriculum between participating Illinois colleges and universities. Transferring students are assured that general education requirements for an associate's degree or lower division general education requirements for a bachelor's degree have been satisfied. Receiving institutions may require admitted transfer students to complete institution-wide and/or mission-related graduation requirements beyond the scope of the IAI general education core curriculum. All community colleges, all public state universities, and most private colleges/universities have endorsed the IAI.

The IAI recommends courses typically taken by freshmen and sophomores for a specific major and those recommendations are noted as part of the course description shown in this catalog. However, those recommendations are intended for students who are undecided about a transfer school. For students who know where they will transfer, see an ECC counselor for an educational plan designed for a particular transfer institution. You may also read about the IAI on the web at [itransfer.org](http://itransfer.org).

## Center for Advanced Studies [elgin.edu/advancedstudies](http://elgin.edu/advancedstudies)

### On Campus Bachelor's Degree Partners

ECC has partnered with Columbia College of Missouri and Northern Illinois University to offer convenient access to upper-level courses leading to a bachelor's degree, allowing students to complete their undergraduate studies without leaving the ECC campus, extensive travel or relocation. Students complete the first two to three years of their bachelor's degree enrolling in ECC courses at ECC's lower tuition rates, then enjoy a seamless transition to one of these schools.

Columbia College of Missouri  
Office: UBC 210, ECC Main Campus  
Phone: 847-214-7197; Fax: 847-214-7003;  
E-Mail: [columbia@elgin.edu](mailto:columbia@elgin.edu)  
Website: [ccis.edu/elgin](http://ccis.edu/elgin)

- Bachelor of arts or science in business administration with majors in: management, marketing or human resources management.
- Bachelor of arts in criminal justice administration or interdisciplinary studies

Northern Illinois University, DeKalb  
Phone: 815-753-7097; 866-885-1239  
Website: [ecc.niu.edu](http://ecc.niu.edu)

- Bachelor of general studies with majors in health and human sciences (for practicing professionals)
- Bachelor of general studies in liberal arts and sciences.
- Bachelor of science in nursing (RN to BSN completion)
- Undergraduate and graduate certificate in geographic information systems

### Dual Admission

ECC partners with Columbia College of Missouri and NIU along with Roosevelt University and Western Illinois University to offer dual admission. That means students take the courses offered by their choice of dual admission partner beginning freshman year, providing they gain admission to one of schools participating in dual admission. Beginning junior year, students take classes on the home campus of their school.

### Compact Agreement

ECC has an agreement with nine of 12 public universities in Illinois which provides automatic junior standing upon transfer to students who earn either the Associate in Arts or the Associate in Science degree at ECC. They are:

Eastern Illinois University  
Governors State University  
Illinois State University  
Northeastern Illinois University  
Northern Illinois University  
Southern Illinois University, Carbondale  
Southern Illinois University, Edwardsville  
University of Illinois, Springfield  
Western Illinois University

It is recommended that students considering the University of Illinois - Champaign-Urbana, University of Illinois - Chicago, Chicago State University, any private school, or any out-of-state school select ECC courses to match the specific freshman and sophomore requirements at those institutions.

### Transfer Educational Plans by Major

In addition to the offerings of advanced studies partners, ECC counselors will help ECC students create an educational plan for successful transfer to any college or university. Transfer plans for more than 20 colleges and universities, the most popular ECC transfer destinations, are available online along with more than 40 common college majors at [elgin.edu/academics](http://elgin.edu/academics), select university transfer. For more information, call the ECC Counseling & Transfer Center, 847-214-7390.

## Associate in Arts Degree

These requirements are effective for new students admitted to ECC beginning summer, 1998 or later.

This degree is designed for transfer to four year institutions and intended for students majoring in Art/Commercial Art, Behavioral Sciences, Communications, Criminal Justice, Education, Foreign Languages, Home Economics (Consumer and Family Studies), Humanities, Liberal Arts, Music, Pre-Law, Social Sciences and Theatre.

Graduates earning this degree meet the requirement for coursework on improving human relations as defined in 110 ILCS 205/9.21 (formerly Ill.Rev. Stat. 1991 Ch. 144 sec. 189.21) or PA-87-581.

The college recommends all students create an Educational Plan with a counselor in the ECC Counseling Center prior to registering. Students with previous academic, career and life experiences are encouraged to have a transcript analysis completed and to investigate CLEP and ECC Proficiency Credit to fulfill prerequisite, course and/or degree requirements.

Each of the courses listed below has an Illinois Articulation Initiative (IAI) equivalent number. Refer to the Course Description section in this catalog for course titles, IAI numbers, and specifics.

### 1. General Education Requirement.....37 sem. hrs.

#### A. Communications ..... 9 sem. hrs.

Three courses including a two course sequence in writing (6 semester credits) and one course (3 semester credits) in oral communication. A C or better in English (ENG) 101 and 102 is required for those students entering summer 1999 or later.  
 ENG - English 101 and 102.....6 sem. hrs.  
 SPH - Speech 101.....3 sem. hrs.

#### B. Mathematics ..... 3 sem. hrs.

One course from the list below-  
 MTH - Math 101, 102, 120, 125, 126, 133, 134, 201  
 MTH 113 (for elementary education majors only)

#### C. Physical and Life Sciences ..... 7 sem. hrs.

Two courses with one course selected from the life sciences and one course from the physical sciences and including one laboratory course (Note: L=Lab)

##### Physical Sciences

ATY - Astronomy 100  
 CHM - Chemistry 115L  
 CHM 101L, 112L, 142L (only one counts for IAI Physical Sciences course)  
 GEO - Geography 115  
 GLY - Geology 105, 112L  
 PHY - Physics 101L, 111L  
 APS - Physical Science 111L, 211L

##### Life Sciences

BIO - Biology 105, 115L, 150L  
 BIO 110L, 113L (only one counts for IAI Life Sciences course)

#### D. Humanities and Fine Arts .....9 sem. hrs.

Three courses with at least one course selected from humanities and at least one course from the fine arts  
 (Note: N=human diversity from a non-western perspective; D=human diversity within the United States)

##### Humanities

Foreign Languages FLF 104, FLG 104, FLS 104 (only one counts for IAI Humanities course)  
 HIS - History 118, 160  
 HUM - Humanities 110, 112, 113,170N, 202, 203N, 204, 205, 216  
 HUM 115, 116 (only one counts for IAI Humanities course)  
 LIT - Literature 201, 202, 203, 205, 210D, 211D, 214, 215, 216, 217, 223N, 229, 235  
 LIT 230, 241, 243, 245 (only one counts for IAI Humanities course)  
 LIT 231, 242, 244 (only one counts for IAI Humanities course)

##### Fine Arts

ART - Art 115, 151, 154N, 155  
 ART 152, 153 (only one counts for IAI Fine Arts course)  
 MUS - Music 104N, 105, 106, 107  
 THE - Theatre 100, 122, 124

##### Interdisciplinary Humanities & Fine Arts

(May count as either Humanities or Fine Arts)  
 HUM - Humanities 101, 102, 103N  
 SPH - Speech 106

### E. Social & Behavioral Sciences ..... 9 sem. hrs.

Three courses with at least one course selected from Social Sciences and at least one course selected from Behavioral Sciences (Note: N=human diversity from a non-western perspective; D=human diversity within the United States)

#### 1. Social Sciences

BEC - Economics 101, 102, 103  
 GEO - Geography 116N  
 HIS - History 101, 102, 115N, 116N, 120N, 121N, 130N, 131N, 140N, 141N, 151, 152  
 POS - Political Science 150, 151, 152, 250, 251N, 253N

#### 2. Behavioral Sciences

ATR-Anthropology 120N, 210, 220N, 250  
 PSY-Psychology 100, 212, 214, 218  
 SOC-Sociology 100, 201, 209D, 210, 220D  
 PSY 215, SOC 215 (only one counts for IAI Behavioral Sciences course)

### 2. Major Field & Elective Courses.....23 Sem. Hrs.

Students should choose an intended major at a transfer institution as soon as possible and select courses which are required for their major.

After fulfilling required courses for their major, students may complete this area with electives. In general, any course numbered 100 or above with a 1.1 code in the course description may be used. If the student wishes to enroll in a course which does not have a 1.1 code he/she should see a counselor prior to enrolling to discuss the transferability of the course.

### 3. College Requirements

1. A total of 60 hours or more must be completed as specified. This total cannot include any credits earned in courses numbered below 100 nor any courses with ABE, DPB, ELC, or ESL prefixes. The 60 hours total may include up to four hours of credit in Physical Education, courses prefixed by PHC, PHM, or PHW.
2. A minimum cumulative grade point average of 2.0 for all courses numbered 100 and above.
3. Meet the college's Academic Residency requirement which means a minimum of 15 semester hours in courses numbered 100 and above must have been achieved at ECC, excluding CLEP and proficiency credits.
4. Fulfill the requirements of Illinois Senate Bill 195 in one of the following ways:
  - a. A transcript from an Illinois high school, college or university (or GED scores) which shows evidence that the Constitution requirement has been met since 1953 and is on file in the ECC Records Office.
  - b. A passing grade in either POS 150 or HIS 151 at ECC or its equivalent at another Illinois college or university.
  - c. Successful completion of a Constitution Review test at ECC.
5. Students may apply up to six hours of Independent Study credit toward any associate degree.

## Associate in Science Degree

These requirements are effective for new students admitted to ECC beginning summer, 1998 or later.

This degree is designed for transfer to four year institutions and intended for students majoring in Aviation, Business, Computer & Information Sciences, Engineering, Health related fields, Math, Physical Education/Recreation, Pre-medicine/dentistry, and Science.

Graduates earning this degree meet the requirement for coursework on improving human relations as defined in 110 ILCS 205/9.21 (formerly Ill.Rev. Stat. 1991 Ch. 144 sec. 189.21) or PA-87-581.

The college recommends all students create an Educational Plan with a counselor in the ECC Counseling Center prior to registering. Students with previous academic, career and life experiences are encouraged to have a transcript analysis completed and to investigate CLEP and ECC Proficiency Credit to fulfill prerequisite, course and/or degree requirements.

Each of the courses listed below has an Illinois Articulation Initiative (IAI) equivalent number. Refer to the Course Description section in this catalog for course titles, IAI numbers, and specifics.

### 1. General Education Requirement.....41 sem. hrs.

#### A. Communications .....9 sem. hrs.

Three courses including a two course sequence in writing (6 semester credits) and one course (3 semester credits) in oral communication. A C or better in English (ENG) 101 and 102 is required for those students entering summer 1999 or later.

ENG - English 101 and 102.....6 sem. hrs.  
SPH - Speech 101.....3 sem. hrs.

#### B. Mathematics .....6 sem. hrs.

Two courses selected from the courses listed below  
MTH - Math 101, 102, 120, 125, 126, 133, 134, 201  
MTH 113 (for elementary education majors only)

#### C. Physical and Life Sciences .....8 sem. hrs.

Two courses with one course selected from the life sciences and one course from the physical sciences and including one laboratory course (Note: L=Lab)

#### Physical Sciences

ATY - Astronomy 100  
CHM - Chemistry 115L  
CHM - 101L, 112L, 142L (only one counts for IAI Physical Sciences course)  
GEO - Geography 115  
GLY - Geology 105, 112L  
PHY - Physics 101L, 111L  
APS - Physical Science 111L, 211L

#### Life Sciences

BIO - Biology 105, 115L, 150L  
BIO 110L, 113L (only one counts for IAI Life Sciences course)

#### D. Humanities and Fine Arts.....9 sem. hrs.

Three courses with at least one course selected from humanities and at least one course from the fine arts  
(Note: N=human diversity from a non-western perspective; D=human diversity within the United States)

#### Humanities

Foreign Languages FLF 104, FLG 104, FLS 104 (only one counts for IAI Humanities course)  
HIS - History 118, 160  
HUM - Humanities 110, 112, 113, 170N, 202, 203N, 204, 205, 216  
HUM 115, 116 (only one counts for IAI Humanities course)  
LIT - Literature 201, 202, 203, 205, 210D, 211D, 214, 215, 216, 217, 223N, 229, 235  
LIT 230, 241, 243, 245 (only one counts for IAI Humanities course)  
LIT 231, 242, 244 (only one counts for IAI Humanities course)

#### Fine Arts

ART - Art 115, 151, 154N, 155  
ART 152, 153 (only one counts for IAI Fine Arts course)  
MUS - Music 104N, 105, 106, 107  
THE - Theatre 100, 122, 124

#### Interdisciplinary Humanities & Fine Arts

(May count as either Humanities or Fine Arts)  
HUM - Humanities 101, 102, 103N  
SPH - Speech 106

#### E. Social & Behavioral Sciences .....9 sem. hrs.

Three courses with at least one course selected from Social Sciences and at least one course selected from Behavioral Sciences  
(Note: N=human diversity from a non-western perspective; D=human diversity within the United States)

#### Social Sciences

BEC - Economics 101, 102, 103  
GEO - Geography 116N  
HIS - History 101, 102, 115N, 116N, 120N, 121N, 130N, 131N, 140N, 141N, 151, 152  
POS - Political Science 150, 151, 152, 250, 251N, 253N

#### Behavioral Sciences

ATR - Anthropology 120N, 210, 220N, 250  
PSY - Psychology 100, 212, 214, 218  
SOC - Sociology 100, 201, 209D, 210, 220D  
PSY 215, SOC 215 (only one counts for IAI Behavioral Sciences course)

### 2. Major Field & Elective Courses.. 19 sem. hrs.

Students should choose an intended major at a transfer institution as soon as possible and select courses which are required for their major.

After fulfilling required courses for their major, students may complete this area with electives. In general, any course numbered 100 or above with a 1.1 code in the course description may be used. If the student wishes to enroll in a course which does not have a 1.1 code he/she should see a counselor prior to enrolling to discuss the transferability of the course.

### 3. College Requirements

1. A total of 60 hours or more must be completed as specified. This total cannot include any credits earned in courses numbered below 100 nor any courses with ABE, DPB, ELC, or ESL prefixes. The 60 hours total may include up to four hours of credit in Physical Education, courses prefixed by PHC, PHM, or PHW.
2. A minimum cumulative grade point average of 2.0 for all courses numbered 100 and above.
3. Meet the college's Academic Residency requirement which means a minimum of 15 semester hours in courses numbered 100 and above must have been achieved at ECC, excluding CLEP and proficiency credits.
4. Fulfill the requirements of Illinois Senate Bill 195 in one of the following ways:
  - a. A transcript from an Illinois high school, college or university (or GED scores) which shows evidence that the Constitution requirement has been met since 1953 and is on file in the ECC Records Office.
  - b. A passing grade in either POS 150 or HIS 151 at ECC or its equivalent at another Illinois college or university.
  - c. Successful completion of a Constitution Review test at ECC.
5. Students may apply up to six hours of Independent Study credit toward any associate degree.

## Associate in Fine Arts Degree

These requirements are effective for new students admitted to ECC beginning summer, 1998 or later.

### Visual Art Emphasis

Illinois colleges and universities offer two different bachelor's degrees in art: the professional Bachelor of Fine Arts (B.F.A.) degree and the Bachelors of Arts (B.A.) degree with a major in art. In general, the B.F.A. degree requires about 135 semester credits for completion, while the B.A. degree with a major in art requires 120 to 124 semester credits for completion. The B.F.A. degree generally requires more studio art courses than does the B.A. degree. In some colleges and universities, a B.A. degree requires competency in a foreign language, while the B.F.A. degree often does not.

To transfer as a junior into either a B.F.A. or a B.A. program with a major in art, students should select the option described below in consultation with a faculty member in the art department. Since transfer admission is competitive, completion of this option does not guarantee admission. Most institutions require a portfolio review for admission to a B.F.A. program, for registration in advance studio art courses, and/or for scholarship consideration. Community and junior college students are strongly encouraged to complete an associate degree before transferring.

The General Education courses required for the A.F.A. degree are approved by the Illinois Articulation Initiative (IAI); however, the structure of the A.F.A. degree does not meet the minimum IAI general education core requirements.

Each of the courses listed below has an IAI equivalent number. Refer to the Course Description section in this catalog for course titles, IAI numbers, and specifics.

### 1. General Education Requirement..... 31-33 sem. hrs.

- A. Communications ..... 9 sem. hrs.**  
Three courses including a two course sequence in writing (6 semester credits) and one course (3 semester credits) in oral communication. A C or better in English (ENG) 101 and 102 is required for freshmen entering summer 1999 or later.  
ENG - English 101 and 102.....6 sem. hrs.  
SPH - Speech 101.....3 sem. hrs.
- B. Mathematics ..... 3-4 sem. hrs.**  
One course selected from the courses listed below  
MTH - Math 101, 102, 120, 125, 126, 133, 134, 201

### C. Physical & Life Sciences ..... 7-8 sem. hrs.

Two courses with one course selected from the Physical Sciences and one course from the Life Sciences and including one laboratory course (Note: L=Lab)

- Physical Sciences**  
 ATY - Astronomy 100  
 CHM - Chemistry 115L  
 CHM 101L, 112L, 142L (only one counts for IAI Physical Sciences course)  
 GEO - Geography 115  
 GLY - Geology 105, 112L  
 PHY - Physics 101L, 111L  
 APS - Physical Science 111L, 211L

- Life Sciences**  
 BIO - Biology 105, 115L, 150L  
 BIO 110L, BIO 113L (only one counts for IAI Life Sciences course)

### D. Humanities ..... 6 sem. hrs.

(Note: N=human diversity from a non-western perspective; D=human diversity within the United States)

- Humanities:**  
 Foreign Language FLF 104, FLG 104, FLS 104 (only one counts for IAI Humanities course)  
 HIS - History 118, 160  
 HUM - Humanities 101, 102, 103N, 110, 112, 113, 170N, 202, 203N, 204, 205, 216  
 HUM 115, 116 (only one counts for IAI Humanities course)  
 LIT - Literature 201, 202, 203, 205, 210D, 211D, 214, 215, 216, 217, 223N, 229, 235  
 LIT 230, 241, 243, 245 (only one counts for IAI Humanities course)  
 LIT 231, 242, 244 (only one counts for IAI Humanities course)  
 SPH - Speech 106

### E. Social & Behavioral Sciences ..... 6 sem. hrs.

Two courses with one course selected from Social Sciences and one course from Behavioral Sciences (Note: N=human diversity from a non-western perspective; D=human diversity within the United States)

- Social Sciences**  
 BEC - Economics 101, 102, 103  
 GEO - Geography 116N  
 HIS - History 101, 102, 115N, 116N, 120N, 121N, 130N, 131N, 140N, 141N, 151, 152  
 POS - Political Science 150, 151, 152, 250, 251N, 253N

- Behavioral Sciences**  
 ATR - Anthropology 120N, 210, 220N, 250  
 PSY - Psychology 100, 212, 214, 218  
 SOC - Sociology 100, 201, 209D, 210, 220D  
 PSY 215, SOC 215 (only one counts for IAI Behavioral Sciences course)

## 2. Major Field & Elective Courses

- Required Art Courses .....21 sem. hrs.  
 Art History, ART 151, 152, and/or 153 .....6 sem. hrs.  
 Drawing, ART 101 and 102 .....6 sem. hrs.  
 Two-Dimensional Design, ART 109.....3 sem. hrs.  
 Three-Dimensional Design, ART 110 .....3 sem. hrs.  
 Life/Figure Drawing, ART 201 .....3 sem. hrs.  
 Elective Studio Art Courses .....9 sem. hrs.  
 Select studio art courses from at least two of the following disciplines in consultation with an art faculty member:  
 Painting, ART 107, \*108  
 Ceramics, ART 105, \*106  
 Sculpture, ART 103, \*104  
 Printmaking, ART 113, \*114  
 Jewelry and Metalworking, ART 111, \*112  
 Photography, ART 120, \*121

\*Transferability of this course is dependent on a portfolio examination at the senior institution.

## 3. College Requirements

- A. A total of 60 hours or more must be completed as specified. This total cannot include any credits earned in courses numbered below 100 nor any courses with ABE, DPB, ELC, or ESL prefixes. The 60 hours total may include up to four hours of credit in Physical Education, courses prefixed by PHC, PHM, or PHW.
- B. A minimum cumulative grade point average of 2.0 for all courses numbered 100 and above.
- C. Meet the college's Academic Residency requirement which means a minimum of 15 semester hours in courses numbered 100 and above must have been achieved at ECC, excluding CLEP and proficiency credits.
- D. Fulfill the requirements of Illinois Senate Bill 195 in one of the following ways:
  - 1) A transcript from an Illinois high school, college or university (or GED scores) which shows evidence that the Constitution requirement has been met since 1953 and is on file in the ECC Records Office.
  - 2) A passing grade in either POS 150 or HIS 151 at ECC or its equivalent at another Illinois college or university.
  - 3) Successful completion of a Constitution Review test at ECC.
- E. Students may apply up to six hours of Independent Study credit toward any associate degree.

## Music Performance Emphasis

Any community or junior college student who intends to major in music for the baccalaureate degree is strongly encouraged to complete the Associate in Fine Arts (A.F.A.) degree in music, not the Associate in Arts (A.A.) degree or the Associate in Science (A.S.) degree prior to transfer.

To transfer as a junior into a baccalaureate program with a major in Music, students should select the option described in consultation with a faculty member in the music department. Completion of the A.F.A. degree, however, does not fulfill the requirements of the Illinois General Education Core Curriculum, nor does it fulfill the requirements for the A.A. or the A.S. degree. Therefore, students will need to fulfill the general education requirements of the institution to which they transfer. Transfer admission is competitive. Completion of this option alone does not guarantee admission either to the baccalaureate program or to upper-division or specialty music courses. Students may be required to demonstrate skill level through auditions and placement testing at the institution to which they transfer. In some colleges and universities, a baccalaureate degree may also require competency in a foreign language.

The General Education courses required for the A.F.A. degree are approved by the Illinois Articulation Initiative (IAI); however, the structure of the A.F.A. degree does not meet the minimum IAI general education core requirements.

### 1. General Education

**Requirement.....28-32 sem. hrs.**  
Each of the courses listed below has an Illinois Articulation Initiative (IAI) equivalent number. Refer to the Course Description section in this catalog for course titles, IAI numbers, and specifics.

#### A. Communications .....9 sem. hrs.

Three courses including a two course sequence in writing (6 semester credits) and one course (3 semester credits) in oral communication. A C or better in English (ENG) 101 and 102 is required for freshmen entering summer 1999 or later.  
ENG - English 101 and 102.....6 sem. hrs.  
SPH - Speech 101.....3 sem. hrs.

#### B. Mathematics .....3-4 sem. hrs.

One course selected from the courses listed below  
MTH - Math 101, 102, 120, 125, 126, 133, 134, 201

#### C. Physical & Life Sciences .....7-8 sem. hrs.

Two courses with one course selected from the Physical Sciences and one course from the Life Sciences and including one laboratory course (Note: L=Lab)

##### Physical Sciences

ATY - Astronomy 100  
CHM - Chemistry 115L  
CHM 101L, 112L, 142L (only one counts for IAI Physical Sciences course)  
GEO - Geography 115  
GLY - Geology 105, 112L  
PHY - Physics 101L, 111L  
APS - Physical Science 111L, 211L

##### Life Sciences

BIO - Biology 105, 115L, 150L  
BIO 110L, 113L (only one counts for IAI Life Sciences course)

#### D. Humanities.....6-7 sem. hrs.

(Note: N=human diversity from a non-western perspective; D=human diversity within the United States)

##### Humanities:

Foreign Language FLF 104, FLG 104, FLS 104 (only one counts for IAI Humanities course)  
HIS - History 118, 160  
HUM - Humanities 101, 102, 103N, 110, 112, 113, 170N, 202, 203N, 204, 205, 216  
HUM 115, 116 (only one counts for IAI Humanities course)  
LIT - Literature 201, 202, 203, 205, 210D, 211D, 214, 215, 216, 217, 223N, 229, 235  
LIT 230, 241, 243, 245 (only one counts for IAI Humanities course)  
LIT 231, 242, 244 (only one counts for IAI Humanities course)  
SPH - Speech 106

#### E. Social & Behavioral Sciences...3-4 sem. hrs.

One course selected from the courses listed below  
(Note: N=human diversity from a non-western perspective; D=human diversity within the United States)

##### Social Sciences

BEC - Economics 101, 102, 103  
GEO - Geography 116N  
HIS - History 101, 102, 115N, 116N, 120N, 121N, 130N, 131N, 140N, 141N, 151, 152  
POS - Political Science 150, 151, 152, 250, 251N, 253N

##### Behavioral Sciences

ATR - Anthropology 120N, 210, 220N, 250  
PSY - Psychology 100, 212, 214, 218  
SOC - Sociology 100, 201, 209D, 210, 220D  
PSY 215, SOC 215 (only one counts for IAI Behavioral Sciences course)

#### 2. MAJOR FIELD COURSES .....38 sem. hrs.

Music Theory & Aural Skills.....16 sem. hrs.  
MUS 128, 129, 228, and 229  
Music Literature/History.....6 sem. hrs.  
MUS 106 and MUS 107  
Keyboard Skills.....4 sem. hrs.  
MUS 126 and 127  
Ensemble .....4 sem. hrs.  
MUS 101, 102, 108, 110, 111, 112, 124  
Applied Instruction .....8 sem. hrs.  
MUS 140 and 240

#### 3. College Requirements

- A. A total of 60 hours or more must be completed as specified. This total cannot include any credits earned in courses numbered below 100 nor any courses with ABE, DPB, ELC, or ESL prefixes. The 60 hours total may include up to four hours of credit in Physical Education, courses prefixed by PHC, PHM, or PHW.
- B. A minimum cumulative grade point average of 2.0 for all courses numbered 100 and above.
- C. Meet the college's Academic Residency requirement which means a minimum of 15 semester hours in courses numbered 100 and above must have been achieved at ECC, excluding CLEP and proficiency credits.
- D. Fulfill the requirements of Illinois Senate Bill 195 in one of the following ways:
  - 1) A transcript from an Illinois high school, college or university (or GED scores) which shows evidence that the Constitution requirement has been met since 1953 and is on file in the ECC Records Office.
  - 2) A passing grade in either POS 150 or HIS 151 at ECC or its equivalent at another Illinois college or university.
  - 3) Successful completion of a Constitution Review test at ECC.
- E. Students may apply up to six hours of Independent Study credit toward any associate degree.

## Associate in Engineering Science Degree

60-68 Semester Hours

These requirements are effective for new students admitted to ECC beginning Summer 1998.

Bachelor's engineering programs are highly structured to meet the Accreditation Board for Engineering and Technology (ABET) standards required for candidates seeking Illinois registration as a professional engineer. The Associate in Engineering Science (AES) Degree is designed to parallel the first two years of pre-engineering programs at most Illinois universities and facilitates students transferring into a bachelor's engineering program with junior standing.

Due to the rigor of the AES curriculum, it is ideal for students to have taken a fourth course of math in high school, or at least have an aptitude in science and math.

Students should select courses in consultation with a counselor and should decide on their engineering specialty and their preferred transfer school at the beginning of the sophomore year (at 30 semester hours), since engineering course selections may vary by specialty and school. Admission into engineering is very competitive. Completion of the pre-engineering courses alone does not guarantee admission to an engineering program.

The General Education courses required for the AES degree are approved by the Illinois Articulation Initiative (IAI); however, the structure of the AES does not meet the minimum IAI General Education Core Requirements. Students will need to complete the general education requirements of the school to which they transfer.

### 1. General Education Requirements..... 31-43 Sem. Hrs.

- A. Communications ..... 6 Sem. Hrs.**  
A C or better in English (ENG) 101 and 102 is required for freshmen entering summer 1999 or later.  
ENG 101(3), 102(3)
- B. Mathematics ..... 9 Sem. Hrs.**  
MTH 133(4), 134(5)
- C. Life/Physical Science ..... 10 Sem. Hrs.**  
CHM 142(5), PHY 111L(5)

### D. Humanities/Fine Arts..... 3-9 Sem. Hrs.

Choose from approved IAI courses listed below. (If two courses are selected, a two-course sequence in the same discipline is recommended.)

- Humanities**  
Foreign Language - FLF 104(4), FLG 104(4) FLS 104(4) (only one counts for IAI Humanities course)  
History - HIS 118(3), 160(3)  
Humanities - HUM 101(3), 102(3), 103N(3), 110(3), 112(3), 113(3), 170N(3), 202(3), 203N(3), 204(3), 205(3), 216(3)  
HUM 115, 116 (only one counts as IAI Humanities course)  
Literature - LIT 201(3), 202(3), 203(3), 205(3), 210D(3), 211D(3), 214(3), 215(3), 216(3), 217(3), 223N(3), 229(3), 235(3)  
LIT 231(3), 242(3), 244(3) (only one counts as IAI Humanities course)  
LIT 230(3), 241(3), 243(3), 245(3) (only one counts as IAI Humanities course)  
Speech - SPH 106(3)  
**Fine Arts**  
Art - ART 115(3), 151(3), 154N(3), 155(3)  
ART 152(3), 153(3) (only one counts as IAI Fine Arts course)  
Humanities - HUM 101(3), 102(3), 103N(3)  
Music - MUS 104N(3), 105(3), 106(3), 107(3)  
Speech - SPH 106(3)  
Theatre - THE 100 (3), 122 (3), 124(3)

### E. Social/Behavioral Science ..... 3-9 Sem. Hrs.

Choose from Approved IAI Courses listed below. (If two courses are selected, a two-course sequence in the same discipline is recommended.)

- Social Science**  
Economics - BEC 101(3), 102(3), 103(3)  
Geography - GEO 116N(3)  
History - HIS 101(3), 102(3), 115N(3), 116N(3), 120N(3), 121N(3), 130N(3), 131N(3), 140N(3), 141N(3), 151(3), 152(3)  
Political Science - POS 150(3), 151(3), 152(3), 250(3), 251N(3), 253N(3)  
**Behavioral Science**  
Anthropology - 120N(3), 210(3), 220N(3), 250(3)  
Psychology - PSY 100(3), 212(3), 214(3), 218(3)  
Sociology - SOC 100(3), 201(3), 209D(3), 210(3), 220D(3)  
PSY 215(3), SOC 215(3) (only one counts for IAI Behavioral Sciences course)

### 2. \*Essential Prerequisite and Pre-Engineering Specialty Courses..... 22-33 Sem. Hrs.

- A. Essential Prerequisite Courses ..... 17 Sem. Hrs.**  
CIS/MTH 123(4)  
MTH 201(5), 202(3)  
PHY 112(5)
- B. Pre-Engineering Specialty Courses ..... 5-16 Sem. Hrs.**  
BEC 103(3)  
CHM 143(5), 234(5), 235(5)  
CIS 223(4)  
EGR 101(4), 152(3), 252(3)  
PHY 113(1)

\*No math lower than calculus I (MTH 133) will count towards the degree.

### C. Major Field and Elective Courses by Specialty

1. For Mechanical Engineering (Also General Engineering, Aeronautical Engineering, Manufacturing Engineering, and Engineer Mechanics)  
EGR 101, EGR 152, EGR 252  
\*\*Electrical Circuits
2. For Chemical Engineering  
CHM 143, CHM 234, CHM 235
3. For Civil Engineering  
EGR 101, EGR 152, EGR 252
4. For Computer and Electrical Engineering  
\*\*Electrical Circuits
5. For Industrial Engineering  
EGR 152, EGR 252, BEC 103

\*\* The Electrical Circuits courses are available to ECC students at several local community colleges at in-district tuition costs. Please check with the Associate Dean of Counseling for an up-to-date list and directions.

6. Since the following specialties are only offered by one or two schools, see the school for advice on course selection:

- Agricultural Engineering (University of Illinois at Urbana-Champaign)
- Bioengineering (University of Illinois at Chicago and at Urbana-Champaign)
- Materials Sciences and Engineering (IIT and University of Illinois at Urbana-Champaign)
- Mining Engineering (Southern Illinois University at Carbondale)
- Nuclear Engineering (University of Illinois at Urbana-Champaign)

### 3. College Requirements

- A. A total of 60 hours or more must be completed as specified. This total cannot include any credits earned in courses numbered below 100 nor any courses with ABE, DPB, ELC, or ESL prefixes.
- B. No course with a grade less than C will transfer; transfer admission is very competitive.
- C. Meet the college's Academic Residency requirement, which means a minimum of 15 semester hours in courses numbered 100 and above must have been achieved at ECC, excluding CLEP and proficiency credits.
- D. Fulfill the requirements of Illinois Senate Bill 195 in one of the following ways:
  - 1) A transcript from an Illinois high school, college or university (or GED scores) which shows evidence that the Constitution requirement has been met since 1953 and is on file in the ECC Records Office.
  - 2) A passing grade in either POS 150 or HIS 151 at ECC or its equivalent at another Illinois college or university.
  - 3) Successful completion of a Constitution Review test at ECC.
- E. Students may apply up to six hours of Independent Study credit toward any associate degree.

## Associate in Liberal Studies Degree

This highly individualized degree combines both liberal arts and sciences and occupational education course work. It provides a greater element of freedom for the student and is especially beneficial for anyone with broad life or educational experiences.

Because of the individualized nature of this degree, all students pursuing it should develop an educational plan with a counselor and should discuss transfer implications as they develop the plan.

The college requires these students to have a plan of study approved by the Dean of Students or the Associate Dean of Counseling and Career Services on file.

Students with previous academic, career and life experiences are encouraged to investigate the options of proficiency credit to substitute their acquired knowledge for prerequisite, course and/or degree requirements.

This degree is intended to articulate to universities offering the Board of Governor's baccalaureate degree. Transfer of this degree to institutions which do not offer it may result in some loss of credit. Universities offering the Board of Governor's degree are:

Chicago State University  
 Eastern Illinois University  
 Governors State University  
 University of Illinois at Springfield  
 Western Illinois University

Graduates earning this degree meet the requirement for coursework on improving human relations as defined in 110 ILCS 205/9.21 (formerly Ill. Rev. Stat. 1991 Ch. 144 sec. 189.21) or PA-87-581.

### 1. Course Requirements ..... 60 sem. hrs.

See the Course Description section of this catalog for course titles and descriptions.

#### A. Communications

A C or better in English (ENG) 101 and 102 is required for freshmen entering summer 1999 or later.

English Composition I and II  
 (ENG) 101 and 102 ..... 6 sem. hrs.  
 Speech (SPH) 101 ..... 3 sem. hrs.

#### B. Science ..... 3 sem. hrs.

ATY 100 Astronomy ..... 3  
 BIO 105 Survey of Environmental Biology ..... 3  
 BIO 110 Principles of Biology ..... 4  
 BIO 113 Molecular & Cellular Biology ..... 4  
 BIO 114 Organismal Bio, Evolution, Ecology ..... 4  
 BIO 115 Environmental Biology ..... 4  
 BIO 150 General Botany ..... 4  
 BIO 240 Human Anatomy & Physiology ..... 5  
 BIO 245 Human Anatomy and Physiology I ..... 4  
 BIO 246 Human Anatomy and Physiology II ..... 4  
 BIO 265 General Microbiology ..... 4  
 CHM 101 Preparatory Chemistry ..... 5  
 CHM 112 Elements of Chemistry: General ..... 5  
 CHM 115 Chemistry and Society ..... 4  
 CHM 142 General Chemistry I ..... 5  
 CHM 143 General Chemistry II ..... 5  
 CHM 170 Elementary Organic Chemistry ..... 5  
 CHM 221 Quantitative Analysis ..... 4  
 CHM 234 Organic Chemistry ..... 5  
 CHM 235 Organic Chemistry ..... 5  
 GEO 115 Introduction to Physical Geography ..... 3  
 GLY 112 Physical Geology ..... 4  
 PHY Any Physics Course, except 105 and 113 ..... 5  
 APS 111 Survey of Physical Science ..... 4  
 APS 211 Earth Science ..... 4

#### C. Math (MTH) or BUS 120

Business Mathematics ..... 3 sem. hrs.

#### D. Behavioral Sciences ..... 3 sem. hrs.

Anthropology (ATR)  
 Psychology (PSY)  
 Sociology (SOC)

#### E. Social Sciences ..... 3 sem. hrs.

Economics (BEC/ECN) History (HIS)  
 Geography (GEO 116 only) Political Science (POS)  
 International Studies (INS), excluding non-traditional languages

#### F. Areas of Concentration ..... 39 sem. hrs.

One area of concentration from an occupational/vocational field; another from the liberal arts and sciences curriculum.

### 2. College Requirements

- A. A total of 60 hours or more must be completed as specified above. This total cannot include any credits earned in courses numbered below 100 nor any courses with ABE, DPB, ELC, or ESL prefixes. The 60 hours total may include up to four hours of credit in Physical Education, courses prefixed by PHC, PHM, or PHW.
- B. A minimum cumulative grade point average of 2.0 for all courses numbered 100 and above.
- C. Meet the college's Academic Residency requirement which means a minimum of 15 semester hours in courses numbered 100 and above must have been achieved at ECC, excluding CLEP and proficiency credits.
- D. Fulfill the requirements of Illinois Senate Bill 195 in one of the following ways:
  - 1) A transcript from an Illinois high school, college or university (or GED scores) which shows evidence that the Constitution requirement has been met since 1953 and is on file in the ECC Records Office.
  - 2) A passing grade in either Political Science 150 or U.S. History 151 at ECC or its equivalent at another Illinois college/ university.
  - 3) Successful completion of a Constitution Review test at ECC.
- E. Students may apply up to six hours of independent study credit toward any associate degree.



# Career & Technical Education Degree & Certificates

Career and technical education is an outstanding way to enter or re-enter the workforce quickly. It represents more than 155 options of more than 40 different careers that can be completed in two years or less. Programs of study are:

## Business

Accounting  
Entrepreneurship  
Management  
Marketing & retail management  
Office administration technology  
Administrative office professional  
Information processing professional  
Legal office professional  
Medical office professional  
Paralegal

## Computer technologies

Computer aided design & drafting  
Computer & information sciences  
Web technician  
Microcomputer specialist  
Graphic design  
Computerized graphic design  
Multimedia design  
Web design  
Office technology applications

## Fitness

Personal trainer

## Health professions

Clinical laboratory technology  
Dental assisting  
Emergency medical technology - paramedic  
Nursing  
Registered nursing  
Licensed practical nursing  
Basic nurse assistant+  
Phlebotomy  
Physical therapist assistant  
Radiography  
Surgical technology

## Hospitality professions

Culinary Arts & Hospitality Institute of Elgin  
Culinary arts  
Pastry arts  
Restaurant management  
Sanitation certification  
Hotel management

## Human service professions

Early childhood education  
Family violence counseling  
Mental health generalist  
Substance abuse counseling

## Industrial technologies

Energy management  
Heating, air conditioning & refrigeration  
Industrial manufacturing technology  
Integrated systems technology  
Machine tool technology  
Welding

## Public service professions

Criminal justice  
Fire science & safety  
Public safety communications (911)

## Transportation

Automotive  
Truck driving

These study areas, which are detailed over the remaining pages of this section of the catalog, lead to:

Associate of applied science degree  
Vocational specialist certificate  
Basic vocational specialist certificate

Though career and technical education is not intended for automatic transfer to another school, many courses do transfer with appropriate and advanced planning. See your ECC counselor for complete information and work with representatives of your transfer school to assure career and technical education credit will be accepted.

## Vocational skills guarantee

It is the policy of the District 509 Board of Trustees that students graduating with an associate of applied science degree in an occupational program be guaranteed competency in the technical skills represented in the degree. Should the graduate not be able to demonstrate the basic skills expected to his or her employer, the student will be offered up to 15 credit hours of retraining at no additional cost, subject to the following conditions:

- A. The course work for the degree must have been completed at ECC.
- B. The student must have graduated within three years of initial enrollment.
- C. The student must be employed full time in a job directly related to his/her program of study within one year of graduation from the approved program at ECC.
- D. The employer must verify in writing within 90 days of the graduate's initial employment that the graduate lacks competency in specific technical skills, as represented in the degree.
- E. Specific competencies must be identified and verified by the employer in written documentation submitted to ECC.
- F. The retraining must be limited to courses regularly offered by the college and completed within one academic year.
- G. A written retraining plan must be developed by the employer, the graduate and the appropriate instructional dean specifying the courses needed for retraining and the competencies to be demonstrated.
- H. Prerequisites, co-requisites and other admission requirements for retraining courses must be met and are not included in those courses covered in this policy.
- I. Should the student audit, withdraw or not receive a passing grade in a course identified in the retraining plan, it will be included in the offer of 15 credit hours.

- J. The board will waive tuition and lab fees for those courses identified in the retraining plan, but the student must be responsible for any other costs that might be associated with taking the course.

This policy does not apply to those programs in which the graduates are licensed, including, but not limited to, nursing.

The sole recourse available to participants enrolled in this guarantee program shall be limited to retraining in the same class with no recourse for damages, court costs, or any associated costs of any kind or right to appeal beyond those specified by ECC.

## Associate of Applied Science Degree

These requirements are effective for new students admitted to ECC beginning summer, 2008.

The college recommends that all students create an Educational Plan with a counselor in the ECC Counseling Center prior to registering. Students with previous academic, career and life experiences are encouraged to investigate the proficiency credit options to substitute their acquired knowledge for prerequisite, course and/or degree requirements.

This degree is not intended for transfer. For information about courses in the curricula that will transfer or about a transfer oriented program, see an ECC counselor.

### 1. Curriculum Requirements

The student must satisfactorily complete all courses specified in the curriculum of their choice. See the Career & Technical Education Curricula section and the Course Description section of this catalog for details.

Accounting  
 Automotive Service Technology  
 Clinical Laboratory Technology  
 Computer Aided Design and Drafting Technology  
 Computer & Information Sciences  
 Microcomputer Specialist  
 Criminal Justice  
 Culinary Management  
     Culinary Arts  
     Pastry Arts  
     Restaurant Management  
 Energy Management  
 Entrepreneurship  
 Fire Science and Safety  
 Graphic Design  
     Computerized Graphic Design Option  
 Heating, Air Conditioning, and Refrigeration  
 Hotel Management  
 Human Services  
     Early Childhood Education Option  
     Family Violence Counseling Option  
     Mental Health Generalist Option  
     Substance Abuse Counseling Option  
 Industrial Manufacturing Technology  
 IST/Maintenance Technology  
 Machine Tool Technology  
 Management  
 Marketing  
 Multimedia Design  
 Nursing  
 Office Administration Technology  
     Administrative Office Professional Option  
     Legal Office Professional Option  
     Medical Office Professional Option  
     Information Processing Professional Option  
 Retail Management  
 Paralegal  
 Physical Therapist Assistant  
 Radiography  
 Web Design  
 Welding Fabrication Technology

### 2. General Education Requirements

#### A. Communications.....6-9 sem. hrs.

Unless particular courses are specified in the curriculum, students must take two of the writing courses listed below. See the Curriculum and Course Description sections of this catalog for details about courses.

ENG 101 English Composition I ..... 3  
 ENG 102 English Composition II ..... 3  
 BUS 101 Business Communications ..... 3  
 BUS 142 Report Writing ..... 3

Some curricula require SPH 101, Fundamentals of Speech (3), in addition to the 6 hours of written communications.

#### B. Social or Behavioral Science

Unless a particular course is specified in the curriculum, students must choose a course or courses numbered 100 and above from the disciplines listed below. See the Curriculum and Course Description sections for details about courses.

Anthropology (ATR)                      Political Science (POS)  
 Economics (BEC/ECN)                  Psychology (PSY)  
 Geography (GEO 116 only)              Sociology (SOC)  
 History (HIS)  
 International Studies (INS),  
 excluding non traditional languages

#### C. Math or Science

Unless a particular course is specified in the curriculum, students must choose a math or science course numbered 100 and above from the list below. See the Curriculum and Course Description sections for details about courses. (Please note: Although it does not have a MTH or science prefix, BUS 120 Business Mathematics (3) fulfills this requirement in all degrees with a business emphasis.)

Astronomy (ATY)                          Microbiology (BIO)  
 Biology (BIO)                              Physics (PHY)  
 Botany (BIO)                              Physiology (BIO)  
 Chemistry (CHM)                        Science (SCI/APS)  
 Geography (GEO 115 only)  
 Geology (GLY)  
 Mathematics (MTH)

#### D. A minimum of 3 hours in Liberal Education selected from among the following:

ART 115 Art Appreciation ..... 3  
 ART 151 History of Art I ..... 3  
 ART 152 History of Art II ..... 3  
 ART 153 History of Art III ..... 3  
 ART 154 Survey of Non-Western Art ..... 3  
 ART 155 History of Photography ..... 3  
 French, German, Russian Or Spanish..... 3-4  
 HIS 118 Foundations of Civilization ..... 3  
 HIS 160 American Civilization ..... 3  
 HUM, Any Humanities Course..... 3  
 INS, International Studies,  
     non traditional languages ..... 2  
 LIT, Any Literature Course ..... 3  
 MUS 104 Musics of the World ..... 3  
 MUS 105 Music Appreciation ..... 3  
 MUS 106 Music Literature 1440 1750 ..... 3  
 MUS 107 Music Literature 1750 to Present .. 3  
 SPH 106 Introduction to Broadcasting  
     & Film ..... 3  
 SPH 120 Oral Interpretation of Literature ... 3  
 THE 100 Theatre Appreciation ..... 3  
 THE 122 Intro-Theatre History & Literature . 3  
 THE 124 Diversity of American Drama ..... 3

### 3. College Requirements

1. A total of 60 hours or more must be completed in courses numbered 100 and above as specified in the curriculum. This total cannot include any courses with ABE, DPB, ELC, or ESL prefixes.
2. A minimum cumulative grade point average of 2.0 for all courses that are applied to the degree.
3. Meet the college's Academic Residency requirement which means a minimum of 15 semester hours must have been achieved at ECC, excluding CLEP and proficiency credits.
4. Fulfill the requirements of Illinois Senate Bill 195 in one of the following ways:
  - A. A transcript from an Illinois high school, college or university (or GED scores) which shows evidence that the Constitution requirement has been met since 1953 and is on file in the ECC Records Office;
  - B. A passing grade in either Political Science 150 or U.S. History 151 at ECC or its equivalent at another Illinois college/university;
  - C. Successful completion of a Constitution Review test at ECC.
5. Students may apply up to six hours of Independent Study credit toward any associate degree.

# Career & Technical Education Degree & Certificates

## Vocational Specialist Certificates

The college recommends that all students create an Educational Plan with a counselor in the ECC Counseling Center prior to registering. Students with previous academic, career and life experiences are encouraged to investigate the proficiency credit options to substitute their acquired knowledge for prerequisite, course and/or degree requirements.

These certificates are not intended for transfer. For information about courses in the curricula that will transfer see an ECC counselor.

### 1. Curriculum Requirements

The student must satisfactorily complete all courses specified in the curriculum of their choice. For details about these curricula, see the Career & Technical Education Curricula and Course Description sections of this catalog.

A. For curricula with 30-50 total semester hours of credit, the Vocational Specialist Certificate is awarded.

Accounting/Office Technology  
 Administrative Office Assistant  
 Advanced Entrepreneurship  
 Dental Assisting  
 Energy Management  
 Family Violence Counseling  
 Fire Science & Safety  
 First Cook  
 Heating AC & Refrigeration Level III  
 Hotel Management & Marketing  
 Hotel Management Operations  
 Human Services – Early Childhood Education  
 Human Services – Mental Health  
 Human Services – Substance Abuse Counseling  
 Information Processing Assistant  
 Intermediate Entrepreneurship  
 Legal Office Assistant  
 Machine Tool Operations  
 Medical Office Assistant  
 Mold Making  
 Pastry Chef Assistant  
 Practical Nursing  
 Public Safety Communications  
 Restaurant Operations  
 Sheet Metal Mechanics  
 Supervisory & Administrative Management  
 Surgical Technology  
 Welding

In most cases, the courses required for a Vocational Specialist Certificate may be applied toward an Associate of Applied Science Degree in the same field should the student wish to continue study. See an ECC counselor for details.

B. For curricula with 3-29 total semester hours, the Basic Vocational Specialist Certificate is awarded.

Advanced Web Design  
 Arc Welding  
 Auto-CAD  
 Automated Electronic Systems  
 Automotive Electrical Specialist  
 Baking Assistant  
 Basic Nurse Assistant Training Program  
 Brake & Suspension Specialist  
 CAD/Drafting  
 Clinical Laboratory Assistant  
 CNC Operator  
 Computer Office Assistant  
 Culinary Management Cooks Helper  
 Data Entry Office Assistant  
 Dental Office Aide  
 Electrical Systems  
 Emergency Medical Technology-Paramedic  
 EMS  
 Engine Mechanical Repair Specialist  
 Engine Performance Specialist  
 Fire Officer I  
 Fire Science  
 Graphic Software Level I  
 Graphic Software Level II  
 Hazardous Materials & Apparatus  
 Heating AC & Refrigeration Level I  
 Heating AC & Refrigeration Level II  
 Hospitality  
 Information Processing Assistant  
 Introductory Entrepreneurship  
 Lead Baker  
 Management Supervisory and Administrative  
     Mgmt  
 Marketing  
 Mechanical Systems  
 MIG Welding  
 Montessori Early Childhood  
 Montessori Infant/Toddler  
 MOS Access Preparation  
 MOS Excel Preparation  
 MOS PowerPoint Preparation  
 MOS Word Preparation  
 NCLEX-RN Remedial Certificate  
 Nurse-Legal Consultant  
 Office Assistant  
 Paralegal  
 Personal Trainer  
 Phlebotomy  
 Practicing Professional-ProE  
 Preclinical Dental Assisting  
 Prep Cook  
 Public Safety Communications  
 Retail Management  
 Thermoplastics Injection Molding  
 Tool & Die Making  
 Transmission & Drivetrain Specialist  
 Truck Driving  
 Truck Driving Owner/Operator  
 Web Design  
 Web Technician  
 Welding

In most cases, courses required for a Basic Vocational Specialist Certificate may be applied to the Vocational Specialist Certificate and/or the Associate of Applied Science Degree in the same field if the student wishes to continue study. See an ECC counselor for details.

### 2. Communications Requirement

Unless a particular course is specified, students must choose communications courses from the list below if they are required in the curriculum. See the Curriculum and Course Description sections of this catalog for details about courses.

ENG 101 English Composition I .....	3
ENG 102 English Composition II .....	3
BUS 101 Business Communications .....	3
BUS 142 Report Writing .....	3

### 3. College Requirements

1. A minimum cumulative grade point average of 2.0 for all courses that are applied to the certificate.
2. Meet the college's Academic Residency requirement which means one fourth of the curriculum requirements but no less than eight semester hours of credit must have been achieved at ECC, excluding CLEP and proficiency credits. If the certificate requires less than eight semester hours, all courses must be completed at ECC.